



Co-funded by the  
Erasmus+ Programme  
of the European Union



University of Rome  
Tor Vergata  
Italy

Department of Enterprise Engineering

KA2 - Cooperation for innovation and the exchange of good practices  
**Capacity Building in Higher Education**  
Joint project

## Master in Smart Transport and Logistics for Cities / SmaLog

### ***SPECIAL MOBILITY STRAND***



23 March 2021 On-line Meeting



# Overview

- ✓ SMS OVERVIEW
- ✓ Students Mobility
- ✓ Staff Mobility (Training)
- ✓ Staff Mobility (Teaching)



| <b>Budget headings</b>                          | <b>Est. Num of beneficiaries</b> | <b>REAL Num of beneficiaries</b> |
|---|----------------------------------|----------------------------------|
| Staff from Partner Countries                    | 48                               | 39                               |
| Staff from Programme Countries                  | 32                               | 13                               |
| Students from Partner Countries                 | 60                               | 66                               |
| Students from Programme Countries               | 0                                |                                  |
| <b><i>Grant for Special Mobility Strand</i></b> |                                  |                                  |

*IN YELLOW: final values*

## SMS OVERVIEW

# STUDENTS MOBILITY

| Student mobility - GRANT  |      | Student mobility - DONE   |
|---------------------------|------|---------------------------|
| <i>num. beneficiaries</i> |      | <i>num. beneficiaries</i> |
| P03                       | NUUE | 14                        |
| P04                       | LPNU | 15                        |
| P05                       | ZSPU | 17                        |
| P06                       | NTU  | 13                        |
| P07                       | GTU  | 5                         |
| P08                       | BSMA | 2                         |



# NO COMPLETED SURVEY

(ACCORDIND TO THE WEBTOOL)



## ***LPNU:***

**CHERNYKH VOLODYMYRA (*1 generation*)**

**SEMKIV DARIIA (*1 generation*)**

**VOVCHUK MYKHAILO (*1 generation*)**

**PODOROZHNYI MARIAN (*1 generation*)**

## ***ZSTU:***

**DIACHENKO ANDRII (*1 generation*)**

**KHOMENKO IRYNA (*1 generation*)**

**PRYSHCHEPA OLENA (*1 generation*)**

|     |      | Staff mobility - GRANT | Staff mobility - DONE |
|-----|------|------------------------|-----------------------|
|     |      | <i>num.</i>            | <i>num.</i>           |
|     |      | <i>beneficiaries</i>   | <i>beneficiaries</i>  |
| P03 | NUUE | 8                      | 8                     |
| P04 | LPNU | 8                      | 8                     |
| P05 | ZSPU | 8                      | 7                     |
| P06 | NTU  | 8                      | 8                     |
| P07 | GTU  | 8                      | 4                     |
| P08 | BSMA | 8                      | 4                     |

# STAFF MOBILITY (TRAINING)

# NOT REALIZED MOBILITY

|                     |                    | UA STAFF MOBILITY   |                     |
|---------------------|--------------------|---|---------------------|
| UA/GE<br>UNIVERSITY | EU<br>Universities | Amount of Staff according to the EACEA Mobility Tool<br>Staff |                     |
|                     |                    | Plan of mobility  | Not realized        |
| ZSTU                | UNITOV             | 2 persons / 45 days   | 1 person / 45 days  |
| GTU                 | UNIROMA            | 2 persons / 45 days   | 1 person / 45 days  |
|                     | SUT                | 2 persons / 45 days   | 2 persons / 45 days |
|                     | HWS                | 2 persons / 45 days   | 1 person / 45 days  |
| BSMA                | UNIROMA            | 2 persons / 45 days   | 2 person / 45 days  |
|                     | HWS                | 2 persons / 45 days   | 2 person / 45 days  |

| Staff mobility - GRANT |             | Staff mobility - <b>DONE</b> |
|------------------------|-------------|------------------------------|
| <i>num.</i>            |             | <i>num.</i>                  |
| <i>beneficiaries</i>   |             | <i>beneficiaries</i>         |
| P01                    | UNITOV      | 6                            |
| P02                    | UNISAPIENZA | 6                            |
| P09                    | SUT         | 12                           |
| P11                    | HSW         | 8                            |

# STAFF MOBILITY (TEACHING)



**NOT**

# REALIZED MOBILITY

|         | UA/GE<br>UNIVERSI<br>TY | EU STAFF MOBILITY   |              |
|---------|-------------------------|---|--------------|
|         |                         | Amount of Staff according to the EACEA Mobility Tool<br>Staff |              |
|         |                         | Plan/period of<br>mobility                                    | Not realized |
| UNITOV  | NUUE                    | 2 persons   | 2 persons    |
| UNIROMA | LPNU                    | 2 persons   | 2 persons    |
|         | ZSTU                    | 2 persons   | 2 persons    |
|         | BSMA                    | 2 persons   | 2 persons    |
| HWS     | NUUE                    | 2 persons   | 2 persons    |
|         | LPNU                    | 2 persons   | 2 persons    |
|         | GTU                     | 2 persons   | 2 persons    |
|         | BSMA                    | 2 persons   | 2 persons    |
| SUT     | GTU                     | 2 person  | 2 persons    |
|         | BSMA                    | 2 persons   | 1 person     |



# SMS OVERVIEW proposals

## *Student from Programme Countries*

- no further travels

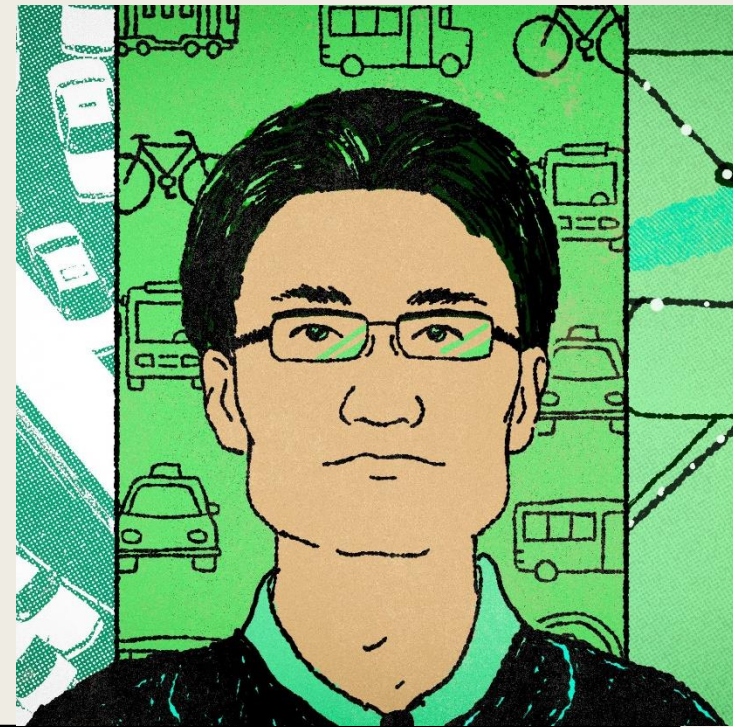


# Staff from Programme Countries (Teaching Mobility)

- Teaching Mobility to UA/GE are expected from HSW and SUT
- UNIROMA1 and UNITOV are expect to carried out e-learning with the UA/GE partners

*Plan of its implementation is*

- *agreed between UA/GE HEIs and EU HEIs independently;*
- *approved by the project Coordinator.*



# Staff from Partner Countries (Training Mobility)

- Teachers from UA/GE could be available to travel to EU if possible



*Plan of its implementation have to be*

- *well substantiated*
- *Approved by Coordinator of the Project*
- *Agreed between UA/GE HEIs and EU HEIs*



Co-funded by the  
Erasmus+ Programme  
of the European Union



**SMA**  
**LOG**

# THANKS FOR YOUR ATTENTION

