



Co-funded by the
Erasmus+ Programme
of the European Union



**University of Rome
Tor Vergata
Italy**

Department of Enterprise Engineering

KA2 - Cooperation for innovation and the exchange of good practices

Capacity Building in Higher Education

Joint project

Master in Smart Transport and Logistics for Cities / SmaLog

DESCRIPTION OF WP3

Theoretical fundamentals of PhD Programme in SmaLog



CENTRO DI RICERCA
PER IL
TRASPORTO E LA LOGISTICA



SAPIENZA
UNIVERSITÀ DI ROMA

ELEONORA META

eleonora.meta@uniroma1.it

CTL Centre for Transport and Logistics

Sapienza University of Rome

P2 – UniRM1

Overview

- ✓ Objectives
- ✓ Task and Deliverables
- ✓ PhD programme concept
- ✓ Planning
- ✓ Roles and responsibilities



Objectives

- ✓ To contribute to harmonization of the Higher Education Systems between EU, UA and GE, by introducing a **PhD programme on Smart Transport and Logistics** in Partner Countries Universities
- ✓ To provide methodological and technological support of the theoretical fundamentals of PhD Programme
- ✓ To jointly evaluate and approve
 - Topics of the programme
 - Implementation approach (e.g. support from industrial and academic sectors)



Task and Deliverables

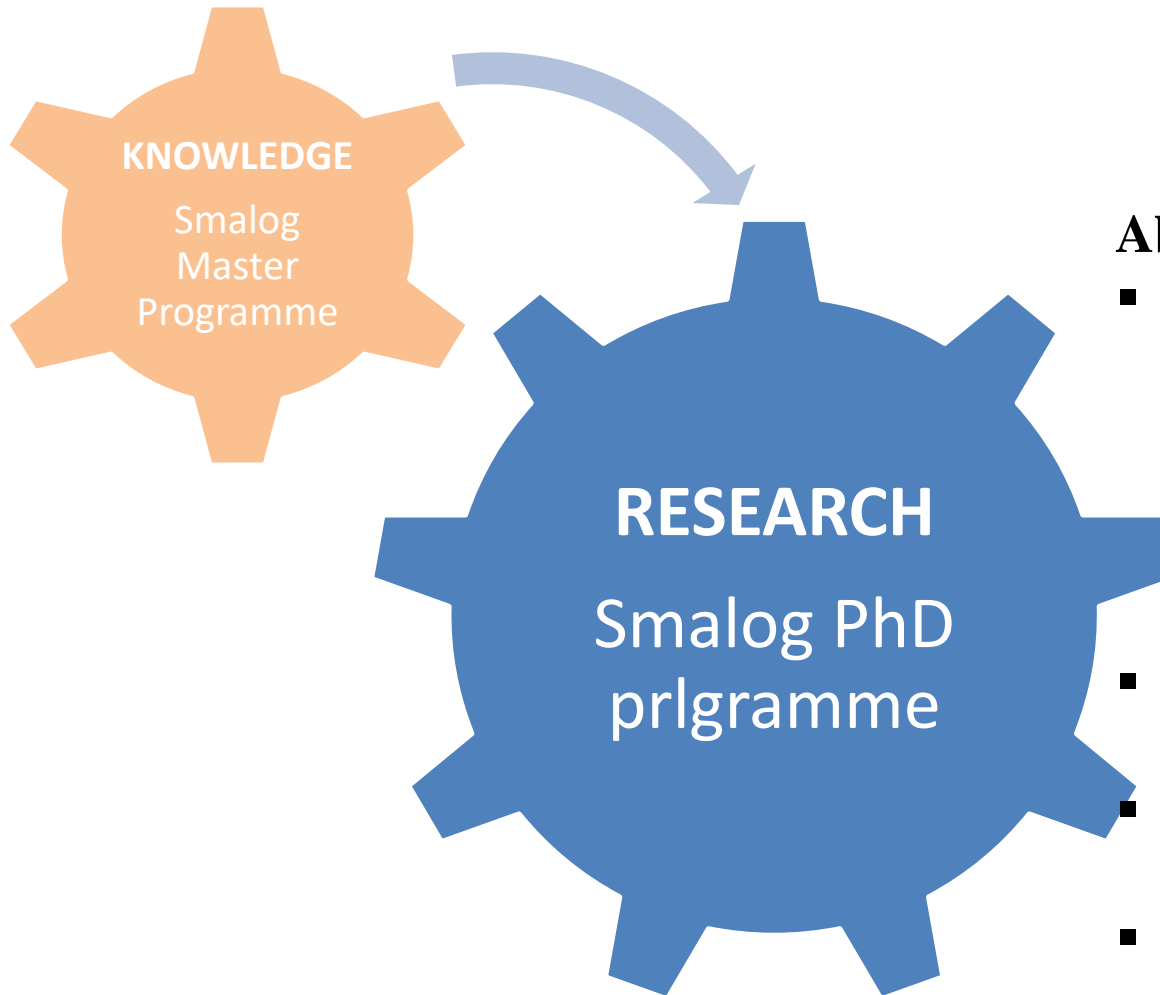
✓ Main output

- *Progress Seminar of Theoretical fundamentals of PhD Programme in SmaLog - Kharkiv on 24-29/08/2020*
- *Theoretical fundamentals of PhD Programme in SmaLog presentation – Tbilisi Final conference on 20-26/09/2020*

✓ Expected Reports

- Inception note (July 2019)
- SmaLog PhD concept and content description (September 2020)
- SmaLog PhD implementation guidelines (September 2020)

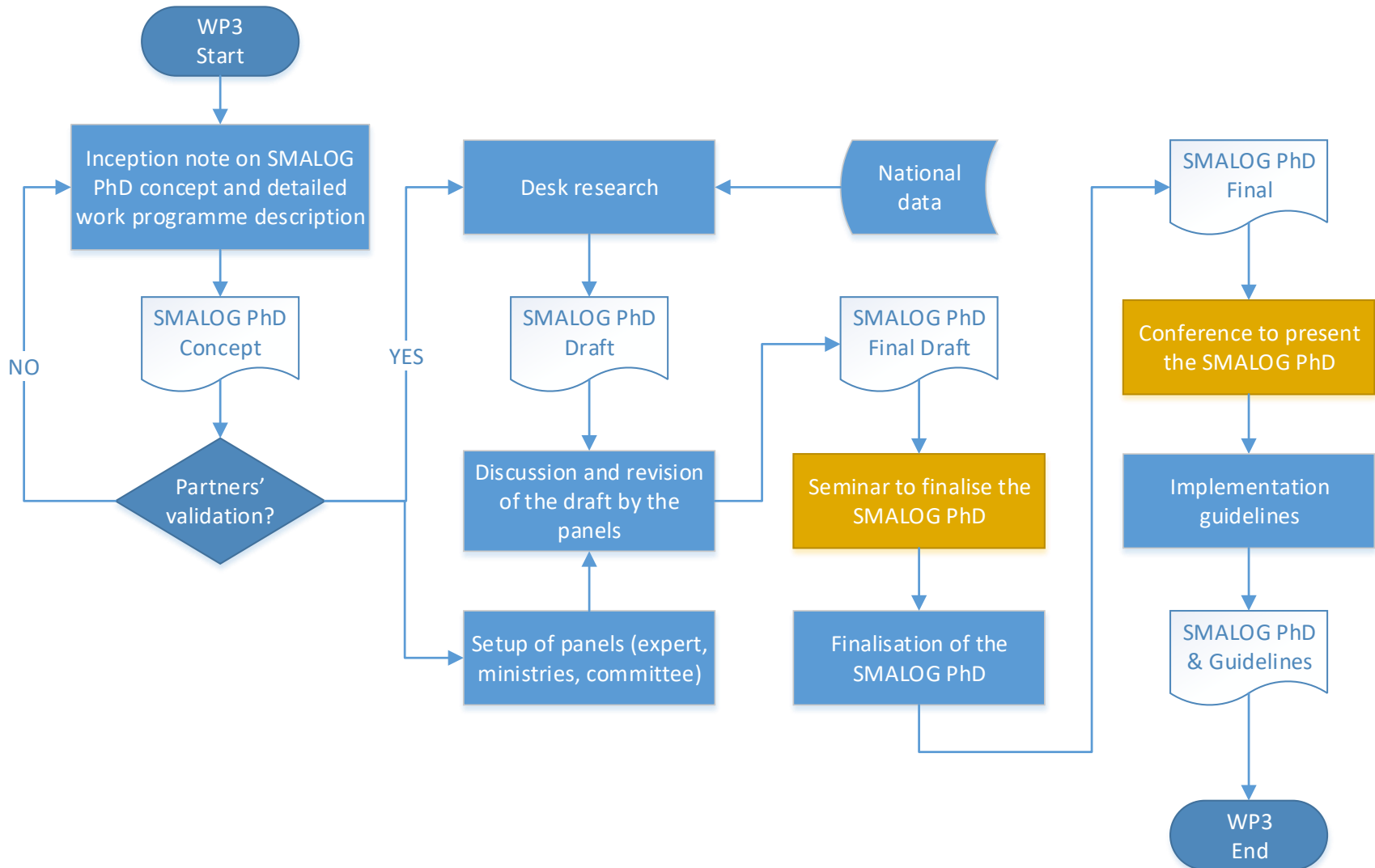
PhD Programme Concept



Abilities to develop:

- Specific expertise and ability to search for relevant work done in an area, as well as the ability to critically read and understand research papers, reports etc...
- Ability to identify research problems
- Ability to actually do the research
- Ability to write and present the results and thesis.

Logical block diagram of the approach



Set up of Panels

Inception note + SmaLog PhD concept and content description draft

Partner	QB Members
P1	Prof. Nuzzolo Agostino Prof. Comi Antonio Prof. Crisalli Umberto
P2	Prof. Persia Luca
P3	Full Prof. Lobashov Oleksii Associate Prof. Dmytro Roslavl
P4	Associated Prof. Zhuk Mykola As. Prof. Volodymyr Kovalyshy
P5	Mamray Vasyl Prof. Volodymyr Shumliakivsky
P6	Full Prof. Polishchuk Volodymyr Associated Prof. Kunitska Olga
P7	Prof. Dr. Giorgi Doborjginidze Temur Ugulava
P8	Mrs. Teona Dzneladze Mrs. Nino Kurshubadze
P9	Prof. Sladkowski Aleksander
P10	Prof. Ilchenko Svitlana Prof. Antonik Iryna
P11	Prof. Gruenwald Nobert

EU, UA and GE experts

Scientific council of PC universities

UA and GE Ministries of Education

PHD PROGRAMME APPROVAL

SmaLog PhD concept and content description draft



Inception note contents

- ✓ PhD Programme's objectives
- ✓ Target group
- ✓ Methodology and approach
- ✓ Expected outcomes



SmaLog PhD concept and contents

- ✓ Research situation needs in UA and GE
- ✓ International review on Transport and Logistics PhD courses



- ✓ PhD duration
- ✓ Entry requirements
- ✓ Potential topics of research
- ✓ Harmonization between UA and GE and with EU standards

Roles and responsibilities

Partner	Country	Role	Main actions
P2	IT	Coordinator	Draft inception note, coordinate desk research, international review and production of PhD concept, Italian panels
P1	IT	Contributor	Desk research, Italian panels
P3, P4, P5, P6, P10	UA	Contributors	Desk research, UA panels, hosting of seminar and conference
P12	UA	Contributor	Validation of PhD from industry
P7, P8	GE	Contributors	Desk research, GE panels
P13	GE	Contributor	Validation of PhD from industry
P11	DE	Contributor	Desk research, German panels
P9	PL	Contributor	Desk research, Polish panels





Co-funded by the
Erasmus+ Programme
of the European Union



**University of Rome
Tor Vergata
Italy**

Department of Enterprise Engineering

KA2 - Cooperation for innovation and the exchange of good practices

Capacity Building in Higher Education

Joint project

Master in Smart Transport and Logistics for Cities / SmaLog

Thanks for your attention



CENTRO DI RICERCA
PER IL
TRASPORTO E LA LOGISTICA



SAPIENZA
UNIVERSITÀ DI ROMA

ELEONORA META

eleonora.meta@uniroma1.it

CTL Centre for Transport and Logistics

Sapienza University of Rome

P2 – UniRM1
